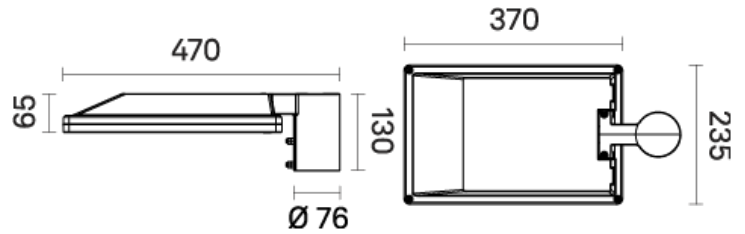


Pixis Top | Luminaire | Pixis Top



Ordering Information / Guide

Example: **LUPIX00-U-D24-830-L075-ST-V0-F35-MU-CN0**

| Optique | Ra+K | Luminous flux | Screen finish | Power supply | Driver Function | ISO Class | Finish |
|---------------------------------|-----------------------------------|------------------------|--------------------------|------------------------|-------------------------|-----------------|------------------------------------|
| D61 Spot | 827 Ra80 2700 K | L015 1500 lm | ST Transparent | V0 120V-277V | F35 0-10V+CLO | MU UL | CN0 Grey [Neri] Textured |
| D63 Medium wide flood | 830 Ra80 3000 K | L025 2500 lm | | | F51 DT8 + CLO | | |
| D64 Wide flood | 840 Ra80 4000 K | L035 3500 lm | | | | | |
| D62 Flood | 8T2 Ra80 TW 2200-4000 K | L040 4000 lm | | | | | |
| D25 T2 narrow | | L045 4500 lm | | | | | |
| D37 T3 medium | | L050 5000 lm | | | | | |
| D59 T3 medium + BLC | | L060 6000 lm | | | | | |
| D24 T4 wide | | L070 7000 lm | | | | | |
| D58 T4 wide + BLC | | L075 7500 lm | | | | | |
| D18 Type V - B | | | | | | | |

Generated code: **LUPIX00 - U** - - - - -

Pixis Top | Luminaire | Pixis Top

SOURCE

High-power LED matrix.

LIGHTING CHARACTERISTICS

Modular 2x2 refractive lenses in PMMA.

MECHANICAL CHARACTERISTICS

Structure with a base and body made of die-cast aluminum (UNI EN 1706) and a lower frame openable for access to the auxiliary compartment. Protective shield in extra-clear tempered glass with IK10 impact resistance (EN 62262) and diffusing plastic adhesive film (code 9565.620.267). Integrated heat sink in die-cast aluminum, internal black reflector in PC, silicone seal between lower frame and upper cover, and compartment prepared for additional surge protectors or remote monitoring systems. Stainless steel screws.

INSTALLATION

Pole-top mounting on Ø 2-3/8" tubes, with Ø 3" outside diameter.

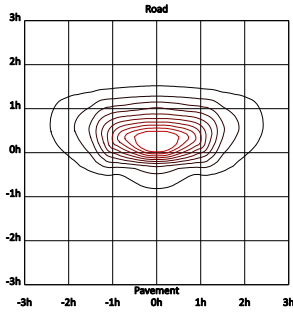
WARNINGS

Luminaire designed for disposal/recycling at end-of-life.
Replaceable (LED only) light source by a professional.
Replaceable control gear by a professional.
Protection of surfaces: please refer to the specification on painting procedures of the materials.

Pixis Top | Luminaire | Pixis Top

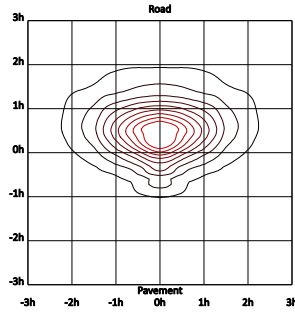
T2 narrow

Transparent



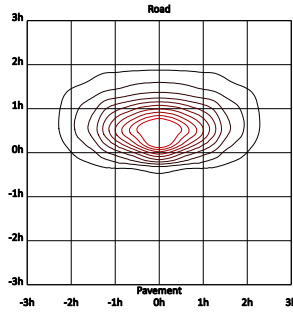
T3 medium

Transparent



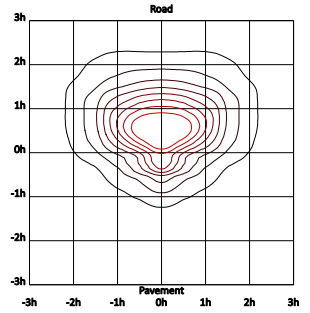
T3 medium + BLC

Transparent



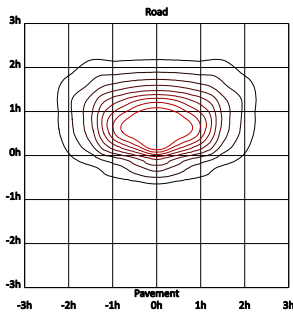
T4 wide

Transparent



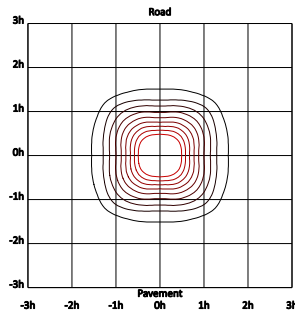
T4 wide + BLC

Transparent



Type V - B

Transparent



Pixis Top | Luminaire | Pixis Top

| Luminous Flux | Nominal CCT | W | lm/W | n° led | Optic | Screen | BUG | | |
|---------------|-------------|------|------|--------|-----------------|-------------|-----|---|---|
| | | | | | | | 1 | 0 | 2 |
| 7500 lm | 2700 K | 76.8 | 98 | 24 | T4 wide | Transparent | 1 | 0 | 2 |
| 7500 lm | 2700 K | 76.8 | 98 | 24 | T2 narrow | Transparent | 1 | 0 | 1 |
| 7500 lm | 2700 K | 76.8 | 98 | 24 | T3 medium | Transparent | 1 | 0 | 1 |
| 7500 lm | 2700 K | 64 | 117 | 24 | Type V - B | Transparent | 2 | 0 | 0 |
| 7500 lm | 3000 K | 72.6 | 103 | 24 | T4 wide | Transparent | 1 | 0 | 2 |
| 7500 lm | 3000 K | 72.6 | 103 | 24 | T2 narrow | Transparent | 1 | 0 | 1 |
| 7500 lm | 3000 K | 72.6 | 103 | 24 | T3 medium | Transparent | 1 | 0 | 1 |
| 7500 lm | 3000 K | 60.6 | 124 | 24 | Type V - B | Transparent | 2 | 0 | 0 |
| 7500 lm | 4000 K | 68.6 | 109 | 24 | T4 wide | Transparent | 1 | 0 | 2 |
| 7500 lm | 4000 K | 68.6 | 109 | 24 | T2 narrow | Transparent | 1 | 0 | 1 |
| 7500 lm | 4000 K | 68.6 | 109 | 24 | T3 medium | Transparent | 1 | 0 | 1 |
| 7500 lm | 4000 K | 57.4 | 131 | 24 | Type V - B | Transparent | 2 | 0 | 0 |
| 2500 lm | 2700 K | 23.9 | 105 | 16 | T4 wide | Transparent | 1 | 0 | 1 |
| 2500 lm | 2700 K | 23.9 | 105 | 16 | T2 narrow | Transparent | 1 | 0 | 1 |
| 2500 lm | 2700 K | 23.9 | 105 | 16 | T3 medium | Transparent | 1 | 0 | 0 |
| 2500 lm | 2700 K | 20.1 | 124 | 16 | Type V - B | Transparent | 1 | 0 | 0 |
| 2500 lm | 2700 K | 32.2 | 78 | 16 | T4 wide + BLC | Transparent | 0 | 0 | 0 |
| 2500 lm | 2700 K | 32.2 | 78 | 16 | T3 medium + BLC | Transparent | 0 | 0 | 0 |
| 2500 lm | 3000 K | 22.8 | 110 | 16 | T4 wide | Transparent | 1 | 0 | 1 |
| 2500 lm | 3000 K | 22.8 | 110 | 16 | T2 narrow | Transparent | 1 | 0 | 1 |
| 2500 lm | 3000 K | 22.8 | 110 | 16 | T3 medium | Transparent | 1 | 0 | 0 |
| 2500 lm | 3000 K | 19 | 132 | 16 | Type V - B | Transparent | 1 | 0 | 0 |
| 2500 lm | 3000 K | 30.5 | 82 | 16 | T4 wide + BLC | Transparent | 0 | 0 | 0 |
| 2500 lm | 3000 K | 30.5 | 82 | 16 | T3 medium + BLC | Transparent | 0 | 0 | 0 |
| 2500 lm | 4000 K | 21.5 | 116 | 16 | T4 wide | Transparent | 1 | 0 | 1 |
| 2500 lm | 4000 K | 21.5 | 116 | 16 | T2 narrow | Transparent | 1 | 0 | 1 |
| 2500 lm | 4000 K | 21.5 | 116 | 16 | T3 medium | Transparent | 1 | 0 | 0 |
| 2500 lm | 4000 K | 18.1 | 138 | 16 | Type V - B | Transparent | 1 | 0 | 0 |
| 2500 lm | 4000 K | 28.9 | 87 | 16 | T4 wide + BLC | Transparent | 0 | 0 | 0 |
| 2500 lm | 4000 K | 28.9 | 87 | 16 | T3 medium + BLC | Transparent | 0 | 0 | 0 |
| 3500 lm | 2700 K | 34.6 | 101 | 16 | T4 wide | Transparent | 1 | 0 | 1 |
| 3500 lm | 2700 K | 34.6 | 101 | 16 | T2 narrow | Transparent | 1 | 0 | 1 |
| 3500 lm | 2700 K | 34.6 | 101 | 16 | T3 medium | Transparent | 1 | 0 | 1 |
| 3500 lm | 2700 K | 28.9 | 121 | 16 | Type V - B | Transparent | 2 | 0 | 0 |
| 3500 lm | 2700 K | 44 | 80 | 24 | T4 wide + BLC | Transparent | 1 | 0 | 1 |
| 3500 lm | 2700 K | 44 | 80 | 24 | T3 medium + BLC | Transparent | 1 | 0 | 1 |
| 3500 lm | 3000 K | 32.7 | 107 | 16 | T4 wide | Transparent | 1 | 0 | 1 |
| 3500 lm | 3000 K | 32.7 | 107 | 16 | T2 narrow | Transparent | 1 | 0 | 1 |
| 3500 lm | 3000 K | 32.7 | 107 | 16 | T3 medium | Transparent | 1 | 0 | 1 |
| 3500 lm | 3000 K | 27.3 | 128 | 16 | Type V - B | Transparent | 2 | 0 | 0 |
| 3500 lm | 3000 K | 44.4 | 79 | 16 | T4 wide + BLC | Transparent | 1 | 0 | 1 |
| 3500 lm | 3000 K | 44.4 | 79 | 16 | T3 medium + BLC | Transparent | 1 | 0 | 1 |
| 3500 lm | 4000 K | 31 | 113 | 16 | T4 wide | Transparent | 1 | 0 | 1 |
| 3500 lm | 4000 K | 31 | 113 | 16 | T2 narrow | Transparent | 1 | 0 | 1 |
| 3500 lm | 4000 K | 31 | 113 | 16 | T3 medium | Transparent | 1 | 0 | 1 |
| 3500 lm | 4000 K | 26 | 135 | 16 | Type V - B | Transparent | 2 | 0 | 0 |
| 3500 lm | 4000 K | 42 | 83 | 16 | T4 wide + BLC | Transparent | 1 | 0 | 1 |
| 3500 lm | 4000 K | 42 | 83 | 16 | T3 medium + BLC | Transparent | 1 | 0 | 1 |
| 4500 lm | 2700 K | 43.9 | 103 | 24 | T4 wide | Transparent | 1 | 0 | 1 |
| 4500 lm | 2700 K | 43.9 | 103 | 24 | T2 narrow | Transparent | 1 | 0 | 1 |
| 4500 lm | 2700 K | 43.9 | 103 | 24 | T3 medium | Transparent | 1 | 0 | 1 |
| 4500 lm | 2700 K | 38.2 | 118 | 16 | Type V - B | Transparent | 2 | 0 | 0 |
| 4500 lm | 2700 K | 58.9 | 76 | 24 | T4 wide + BLC | Transparent | 1 | 0 | 1 |
| 4500 lm | 2700 K | 58.9 | 76 | 24 | T3 medium + BLC | Transparent | 1 | 0 | 1 |
| 4500 lm | 3000 K | 43.3 | 104 | 16 | T4 wide | Transparent | 1 | 0 | 1 |

Pixis Top | Luminaire | Pixis Top

| Luminous Flux | Nominal CCT | W | lm/W | n° led | Optic | Screen | BUG | | |
|---------------|-------------|------|------|--------|-----------------|-------------|-----|---|---|
| | | | | | | | 1 | 0 | 1 |
| 4500 lm | 3000 K | 43.3 | 104 | 16 | T2 narrow | Transparent | 1 | 0 | 1 |
| 4500 lm | 3000 K | 43.3 | 104 | 16 | T3 medium | Transparent | 1 | 0 | 1 |
| 4500 lm | 3000 K | 36.1 | 125 | 16 | Type V - B | Transparent | 2 | 0 | 0 |
| 4500 lm | 3000 K | 55.9 | 81 | 24 | T4 wide + BLC | Transparent | 1 | 0 | 1 |
| 4500 lm | 3000 K | 55.9 | 81 | 24 | T3 medium + BLC | Transparent | 1 | 0 | 1 |
| 4500 lm | 4000 K | 41 | 110 | 16 | T4 wide | Transparent | 1 | 0 | 1 |
| 4500 lm | 4000 K | 41 | 110 | 16 | T2 narrow | Transparent | 1 | 0 | 1 |
| 4500 lm | 4000 K | 41 | 110 | 16 | T3 medium | Transparent | 1 | 0 | 1 |
| 4500 lm | 4000 K | 34.2 | 132 | 16 | Type V - B | Transparent | 2 | 0 | 0 |
| 4500 lm | 4000 K | 52.8 | 85 | 24 | T4 wide + BLC | Transparent | 1 | 0 | 1 |
| 4500 lm | 4000 K | 52.8 | 85 | 24 | T3 medium + BLC | Transparent | 1 | 0 | 1 |
| 6000 lm | 2700 K | 59.9 | 100 | 24 | T4 wide | Transparent | 1 | 0 | 1 |
| 6000 lm | 2700 K | 59.9 | 100 | 24 | T2 narrow | Transparent | 1 | 0 | 1 |
| 6000 lm | 2700 K | 59.9 | 100 | 24 | T3 medium | Transparent | 1 | 0 | 1 |
| 6000 lm | 2700 K | 50.2 | 120 | 24 | Type V - B | Transparent | 2 | 0 | 0 |
| 6000 lm | 3000 K | 56.8 | 106 | 24 | T4 wide | Transparent | 1 | 0 | 1 |
| 6000 lm | 3000 K | 56.8 | 106 | 24 | T2 narrow | Transparent | 1 | 0 | 1 |
| 6000 lm | 3000 K | 56.8 | 106 | 24 | T3 medium | Transparent | 1 | 0 | 1 |
| 6000 lm | 3000 K | 47.6 | 126 | 24 | Type V - B | Transparent | 2 | 0 | 0 |
| 6000 lm | 3000 K | 76.9 | 78 | 24 | T4 wide + BLC | Transparent | 1 | 0 | 1 |
| 6000 lm | 3000 K | 76.9 | 78 | 24 | T3 medium + BLC | Transparent | 1 | 0 | 1 |
| 6000 lm | 4000 K | 53.7 | 112 | 24 | T4 wide | Transparent | 1 | 0 | 1 |
| 6000 lm | 4000 K | 53.7 | 112 | 24 | T2 narrow | Transparent | 1 | 0 | 1 |
| 6000 lm | 4000 K | 53.7 | 112 | 24 | T3 medium | Transparent | 1 | 0 | 1 |
| 6000 lm | 4000 K | 45.1 | 133 | 24 | Type V - B | Transparent | 2 | 0 | 0 |
| 6000 lm | 4000 K | 72.6 | 83 | 24 | T4 wide + BLC | Transparent | 1 | 0 | 1 |
| 6000 lm | 4000 K | 72.6 | 83 | 24 | T3 medium + BLC | Transparent | 1 | 0 | 1 |
| 1500 lm | 2700 K | 18.6 | 81 | 16 | T4 wide + BLC | Transparent | 0 | 0 | 0 |
| 1500 lm | 2700 K | 18.6 | 81 | 16 | T3 medium + BLC | Transparent | 0 | 0 | 0 |
| 1500 lm | 3000 K | 17.6 | 85 | 16 | T4 wide + BLC | Transparent | 0 | 0 | 0 |
| 1500 lm | 3000 K | 17.6 | 85 | 16 | T3 medium + BLC | Transparent | 0 | 0 | 0 |
| 1500 lm | 4000 K | 16.7 | 90 | 16 | T4 wide + BLC | Transparent | 0 | 0 | 0 |
| 1500 lm | 4000 K | 16.7 | 90 | 16 | T3 medium + BLC | Transparent | 0 | 0 | 0 |